

ARCHAEOLOGIX INC.

14 Oxford Street West, London ON N6H 1P9 ~ T: (519)642-7836 F: (519) 642-7733 ~ jimarch@rogers.com



**Archaeological Assessment (Stages 1, 2 & 3), Addendum Report
Lowndes Holdings Corp., Proposed Dolostone Quarry
Lots 2, 3 & Part of 1, Concession 11
Geo. Township of East Flamborough
Now City of Hamilton, Ontario**



December 2004



**Archaeological Assessment (Stages 1, 2 & 3), Addendum Report
Lowndes Holdings Corp., Proposed Dolostone Quarry
Lots 2, 3 & Part of 1, Concession 11
Geo. Township of East Flamborough
Now City of Hamilton, Ontario**

Submitted to

Lowndes Holdings Corp.

15-6400 Millcreek Drive, Suite 347, Mississauga, Ontario L5N 3E7
Tel: (905) 659-5524 Fax: (905) 659-5525

and

Ontario Ministry of Culture

Prepared by

ARCHAEOLOGIX INC.

14 Oxford Street West, London, Ontario, N6H 1P9
Tel: (519)-642-7836 Fax: (519)-642-7733

Archaeological Licence Number P001

CIF # P001-079

Corporate Project Number 2003-093

December 2004

Personnel

Project Coordinator	Jim Wilson, M.A.
Field Director	Adam Hossack, B.Sc.
Report Production	Jim Wilson, M.A.
Field/Office Assistants	Peter Juknys Chris Gervais John Sheen Bear John

Acknowledgments

The completion of this report was facilitated by the assistance of the following individuals:

- **David Lowndes**, President, Lowndes Holdings Corp.; and
- **Robert Von Bitter**, Archaeological Data Coordinator, Archaeology Unit, Heritage Branch, Ontario Ministry of Citizenship, Culture and Recreation, Toronto.

**Archaeological Assessment (Stages 1, 2 & 3) Addendum Report
Lowndes Holdings Corp., Proposed Dolostone Quarry
Lots 2, 3 & Part of 1, Concession 11
Geo. Township of East Flamborough
Now City of Hamilton, Ontario**

1.0 PURPOSE

An archaeological assessment (Stages 1, 2 & 3) was previously conducted for an approximate 153 hectare proposed quarry site, situated on Lots 2, 3 and part of 1, Concession 11, Geo. Township of East Flamborough, now City of Hamilton, Ontario (Figure 1). The assessment was undertaken as part of an aggregate pit licensing application in accordance with the Aggregate Resources Act- Ontario Provincial Standards, for a Category 2- Class A Quarry Below Water, Sections 2.2.5 to 2.2.7. Subsequent to the submission of the initial Stage 1-3 report, the proponent purchased and additional 10.37 acre property, the assessment of which is reported herein.

The additional fieldwork was conducted December 2nd and 3rd, 2004, under archaeological consulting license P001, issued to Jim Wilson by the Minister of Culture. The additional Stage 2 field assessment did not result in the identification of any additional cultural heritage concerns and no additional assessment is recommended.

The additional Stage 2 archaeological assessment was conducted in order to fulfill a standard condition of licence approval. The Ministry of Culture is asked to review the methods and results of this assessment and inform the Ministry of Natural Resources that the provincial concerns for cultural heritage for this application have been met.

2.0 STUDY METHODS

2.1 Stage 2 Field Assessment Methods

The additional lands are primarily comprised of woodlot, with lesser areas of poor drainage, and manicured lawns surrounding an existing residential structure. Because the study area could not be ploughed, the property was assessed using the standard test pit method at a five-meter interval. Areas disturbed by previous development and/or poorly drained areas were judged to have low archaeological potential and were not subject to assessment. Figure 2 indicates the limits of the areas surveyed and the methods employed.

Each test unit was excavated to subsoil, and all soil was screened through six-millimetre hardware cloth to facilitate the recovery of small artifacts. Test units were approximately 30 centimetres in diameter and were back filled. When an artifact was noted in a test pit, the survey interval was reduced to 2.5 metres within a ten-metre radius. Figure 3 depicts the areas assessed and the techniques employed.

Figure 1: Location of Study Area

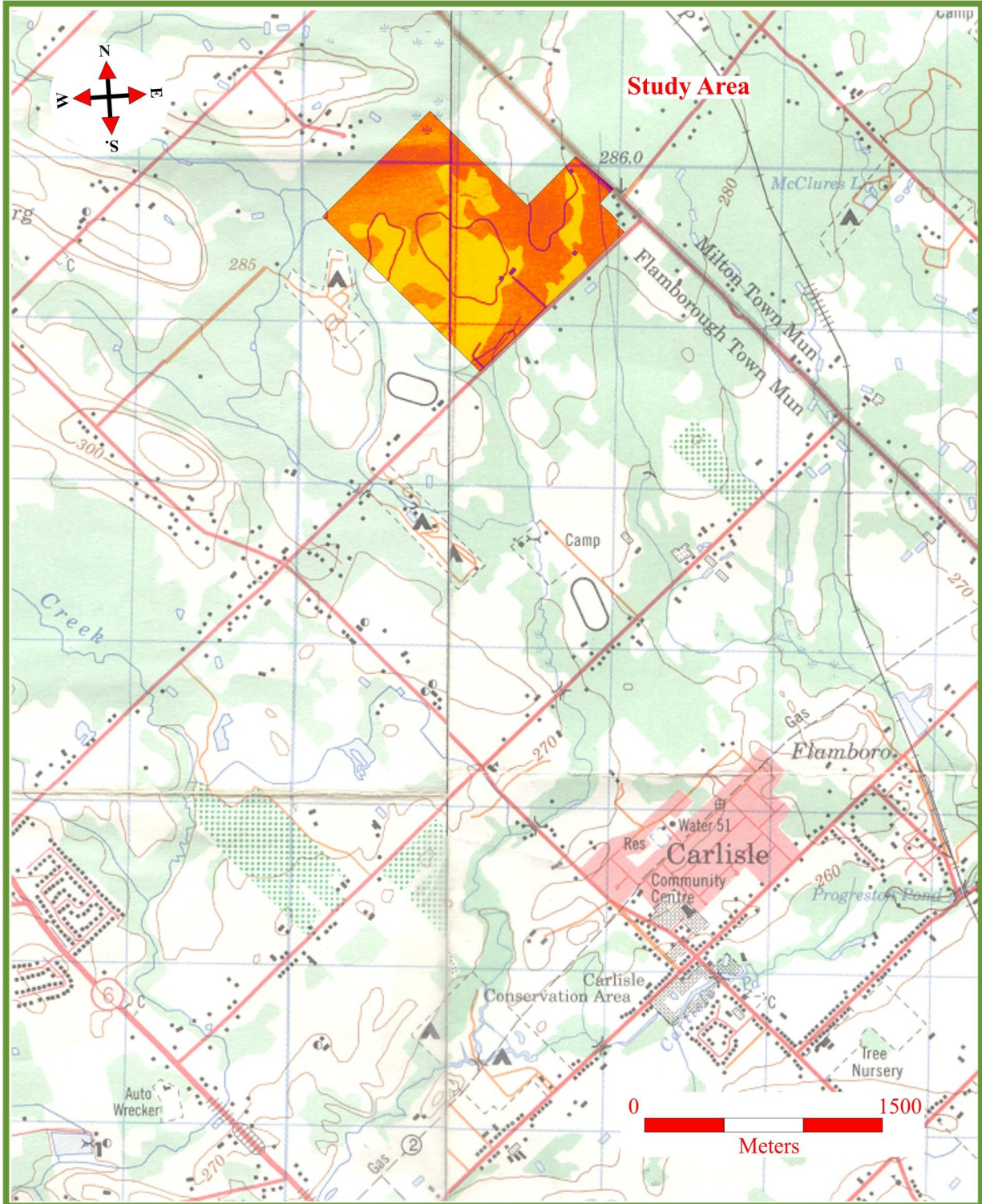
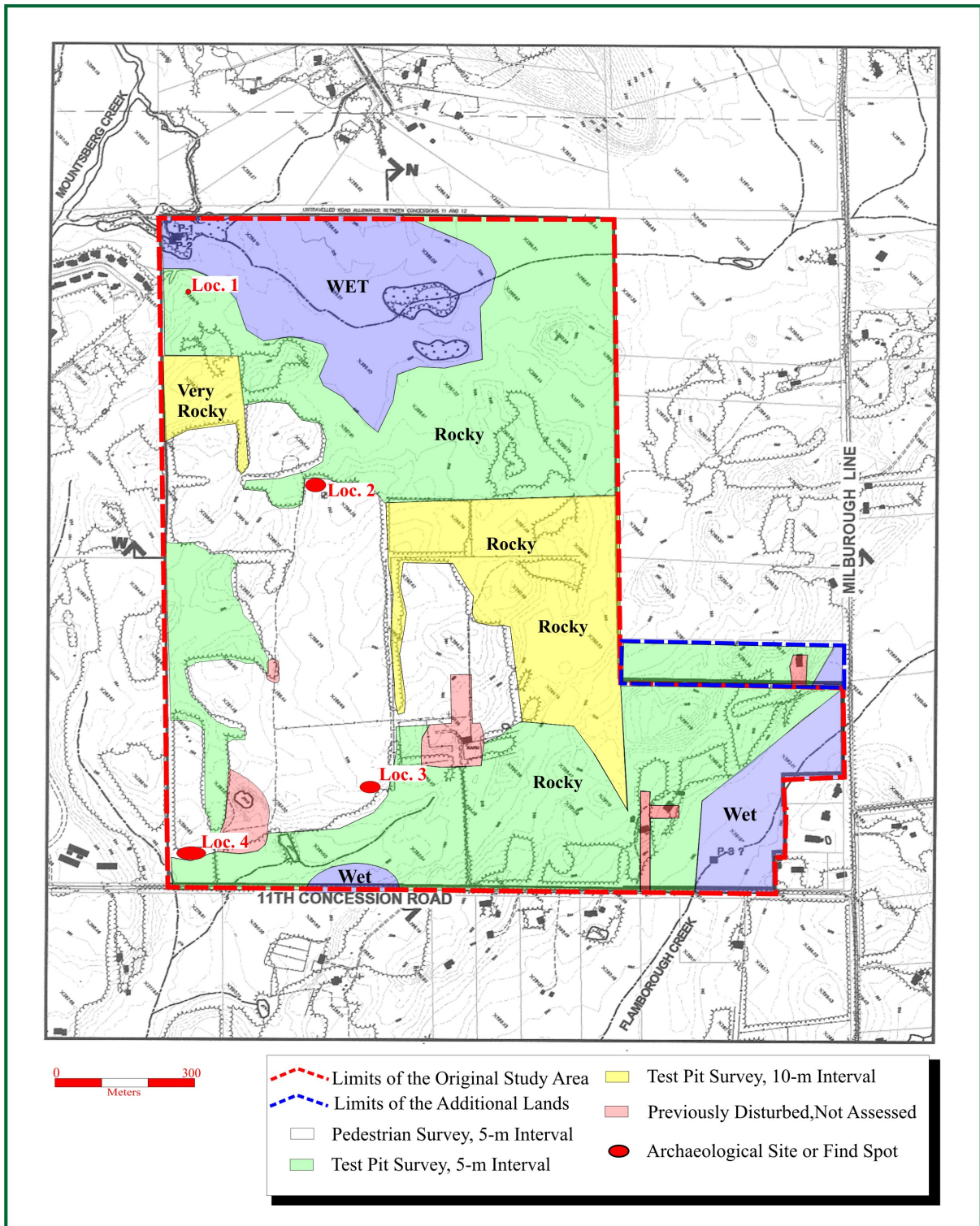


Figure 2: Stage 2 Methods and Results



The weather during the assessment was cool and overcast and there were no conditions detrimental to the recovery of archaeological remains. Permission to enter the property and remove artifacts was granted by Mr. David Lowndes.

3.0 RESULTS

3.1 Background Research

3.1.1 The Natural Environment

The study area is situated within the “Flamborough Plain” physiographic region (Chapman and Putnam 1984: 127-129).

An isolated tract of shallow drift on the Niagara Cuesta northwest of Hamilton has been named the Flamborough plain since it spans Flamborough Township...The limestone has been swept bare in places, particularly near the edge of the escarpment. What little overburden there is on the bedrock, apart from the drumlins, is either bouldery glacial till or sand and gravel...East of the Beverly Swamp, four small streams tributary to Bronte Creek serve the section south of Campbellvale...Good soil is not plentiful in this little region

Chapman and Putnam, 1984:128

The closest source of potable water is a small tributary of Spencer Creek that transects the northern half of the study area. The forested portion of the study area has not been cleared due to excessive surface boulders and limestone outcrops.

3.1.2 Potential for Historic Archaeological Sites

The map of the Township of Flamborough East in the 1875 *Illustrated Map of Wentworth County* does indicate any structures within the limits of the additional lands (Figure 2, Archaeologix Inc. 2004). It is important to note that historical maps are not always accurate and the absence of a structure does not necessarily mean none were present. The historic archaeological potential was judged to be moderate to low.

Figure 3: Stage 2 Survey Conditions



Figure 4: Stage 2, Survey Conditions, Poorly Drained Area



3.2 Stage 2 Field Assessment Results

All previously undisturbed portions of the property were fully assessed using the methods described in Section 2.2. No archaeological resources were documented, and no additional assessment is recommended.

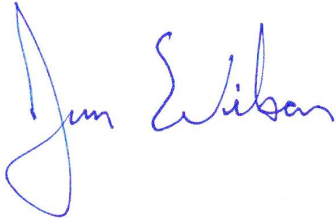
4.0 RECOMMENDATIONS

The Stage 2 field assessment of the additional lands did not result in the recovery of any archaeological resources, and no additional assessment is recommended.

This archaeological assessment was conducted in order to fulfill a standard condition of licence applications. The Ministry of Culture is asked to review the methods and results of this assessment and inform the Ministry of Natural Resources that the provincial concerns for cultural heritage for this application have been met.

Should deeply buried archaeological material be found on the property during construction activities, the Ministry of Culture should be notified immediately (519)-675-7742. In the event that human remains are encountered during construction, the proponent should immediately contact both the Ministry of Culture and the Registrar or Deputy Registrar of the Cemeteries Regulation Unit of the Ministry of Consumer and Commercial Relations, (416) 326-8392.

Respectfully Submitted by:



Jim Wilson, M.A.
President, Archaeologix Inc.
Archaeological Licence # P001

References Cited

Chapman, Lyman John and Donald F. Putnam

2004 **Archaeological Assessment (Stages 1,2 & 3), Lowndes Holdings Corp., Proposed Dolostone Quarry, Lots 2, 3 & Part of 1, Concession 11, Geo. Township of East Flamborough, Now City of Hamilton, Ontario, Toronto.** Report on File with the Ministry of Culture, London Office.

APPENDIX A: Qualifications of the Principal Investigator

Jim Wilson, M.A. President, Archaeologix Inc.

Education History:

- 1988 Honours B.A., University of Western Ontario, London, Ontario Canada.
Department of Anthropology.
- 1990 Master's Degree, McMaster University, Hamilton, Ontario Canada. Department of
Anthropology.

University Lecturing Positions:

- 1993 McMaster University:
- 1994 McMaster University:
- 1995 University of Western Ontario:

Archaeological Experience:

- 97-03 President, Archaeologix Inc.
- 96-97 Principle Field Investigator, Mayer Heritage Consultants Inc.
- 94/95 City of London Archaeologist Planner.
- 1994 Principle Field Investigator, Mayer Heritage Consultants Inc.
- 1993 Ontario Heritage Foundation Research: Research Assistant on the Middle Sydenham
River Survey.
 - McMaster University: Project Director for the Thames River Middle Woodland
Settlement/Subsistence Project.
 - Wilson Heritage Services: Project Director, Aldborough Township
Archaeological Resource Assessment.
- 1992 McMaster University: Project Director for the Thames River Middle Woodland
Settlement/Subsistence Project.
- 1991 Mayer, Poulton and Associates: Field Director for the Edenridge Subdivision
Assessment.
 - Archaeological Research Associates: Field Assistant.
- 1990 McMaster University: Field Assistant on the Mixteca Alta Archaeological
Survey; Oaxaca, Mexico.
- 1989 McMaster University: Project Director of the Boresma Site excavations.

- Mayer, Poulton and Associates. Field Assistant on the Rosedale Subdivision Assessment.
- 1988 Mayer, Pihl and Poulton: Field Assistant for the Ontario Hydro Longwoods Transformer Station Project.
- Mayer, Pihl and Poulton: Assistant on the Union Gas Hamilton to Niagara Falls pipeline survey and subsequent mitigations.
- McMaster University: Field Assistant for the Harvie Site mitigation, a 19th century pioneer cemetery.
- 1987 Mayer, Pihl and Poulton: Field Assistant on the Vaughn Master Plan Survey.
- Museum of Indian Archaeology: Field Assistant for the Matthew's Wood's Project.
- Mayer, Pihl and Poulton: Field Assistant on the Ontario Hydro Longwoods Transformer Station Assessment, Phase One.
- University of Western Ontario Field School.
- 1986 Museum of Indian Archaeology: Field Assistant at the Crawford Lake Site.

Publications:

- 1988 The Snake Creek Burial. *KEWA* 88(7):2-6. (With Dr. M.W. Spence).
- 1991 A Bad Analogy?: Northern Algonquian Models and the Middle Woodland Occupations of Southwestern Ontario. *KEWA*: 91(6):9-22.
- 1991 The Kittmer Site: A Middle Woodland Camp on the Upper Thames Drainage. *KEWA*: 91(6):2-8.
- 1992 Archaeological Investigations at the Duncan McGugan Middle Woodland Site. *Annual Archaeological Review of Ontario*, 71-74 (With Dr. C. Ellis).
- 1993 The Preliminary Investigations at the Pocock Site and the Meadowood Phase along the Middle Thames Drainage. *KEWA*: 93(3):2-21.
- 1993 The Rice Lake Phase Reconsidered. *KEWA*: 93(6):17-25.
- 1994 The Racher Site (AfHi-141): More Evidence Concerning Large Riverine Middle Woodland Sites Along the Middle Thames River Drainage. *KEWA*: 94(4): 2-17.
- 1997 Summary of an On-Going Archaeological Assessment, Lt.-Colonel John Butler Homestead (AgGu-66), Niagara-on-the-Lake. In *Arch Notes* Vol.2(5):6-14. (With R.G. Mayer and S. Gouglas).
- 1997 Cherry Hill: A Kirk Corner-Notched Site at Fonthill, Ontario. *KEWA* : 97(7):2-11. (With B. Wimmer and A. Figura).

- 1998 Osteological Analysis of an Early Woodland Burial: Mo Pierce site, South bay Marina Complex, Township of Pelee, Essex County, Ontario (AnHq-20). *Arch Notes*: 3(3):13-18.
- 1999 The Pocock Site: Exploring the Early Woodland/Middle Woodland Transition in Southwestern Ontario. *KEWA*: 99(1):2-27.
- 1999 The Greg Tarry Site (AeHf-38), A Small Uren Sub-Stage Camp in Aylmer, Ontario. *KEWA*: 99(3):2-8.
- 2000 The Moyer's Flat Site Pot. *KEWA*: 00(7):2-4
- 2002 The Fregg Site (AhGx-390), A Small Point Late Archaic Occupation in Ancaster. *KEWA*: 02(8):1-16

Presentations:

- 1989 An Introduction to the Boresma Site: A Middle Woodland Occupation in the Middle Thames River Drainage. At: **The Ontario Archaeological Society Annual Meeting**; London Ontario.
- 1989 The Middle Woodland Period in the Thames River Drainage. For: **McMaster Anthropology Society**.
- 1992 The 1989 Excavations at the Boresma Site: A Middle Woodland Basecamp. For: **London Chapter of the Ontario Archaeological Society**.
- 1993 The Prehistory of the Delaware Area from the Late Archaic to the Early Late Woodland. For: **London Chapter of the Ontario Archaeological Society**.
- 1993 Early Woodland and Middle Woodland Settlement Systems: Exploring Two Distinct Adaptive Strategies. At: **The Ontario Archaeological Society Annual Meeting**. Niagara Falls, Ontario
- 1993 Which Way to the Lawson Site? Late Woodland Settlement Patterns West of the Caradoc Sand Plain. At: **The Ontario Archaeological Society Annual Meeting**; Niagara Falls, Ontario. (With D. Riddell).
- 1995 Identifying Reductions in Residential Mobility in the Early and Middle Woodland Periods in Southwestern Ontario. At: **The Canadian Archaeological Society Annual Meetings**; Kelowna, British Columbia.
- 1995 GIS applications and archaeological master plans. At: **The Annual ESRI Canada Arc/Info Users Conference**; Waterloo, Ontario.
- 1996 GIS Workshop. At **The 10th Annual Canadian Association of Professional Heritage Consultants Meetings**; Toronto, Ontario.
- 1998 **Archaeological Master Planning, the London Experience**. At: The 1999 Ontario Professional Planners Institute Annual Meetings, Kingston, Ontario.

- 2001 The Van Bree Site: Young Phase/Glen Meyer Interaction near Arkona. For: **London Chapter of the Ontario Archaeological Society.**
- 2002 The Don Crich Site: A Princess Point Camp on the North Branch of the Thames River. For: **London Chapter of the Ontario Archaeological Society.**